

Waltz for Desmond

Jason L. Bruns
©2005

Jazz Waltz $\text{♩} = 82$

1 30" - 45" Vamp (Last x Only) A

Alto Saxophone

Trumpet in Bb *mp*

Trombone

Piano *mp* D/C Simili...ad lib w/ Drums Ad Lib... D/C D/C C-9

String Bass *mf* Simili... A Simili...

Drum Set *mp* Ad Lib Color with Piano Simili...

9

A. Sax.

Tpt. *p*

Tbn. *p*

Pno. *mf* F6/C Ad Lib... F6/C C%9(add ma7) D/C C-9

S. Bass *mf* Ad Lib Jazz Waltz Simili...

Dr. *mf*

17 **B**

A. Sax. *mf*

Tpt. *mp*

Tbn. *mp*

Pno. F⁶/C C⁶(add ma7) A^{b13}sus⁴ Gma⁹sus⁴

S. Bass **B**

Dr.

25

A. Sax. *mp*

Tpt. *p*

Tbn. *p*

Pno. A^{b13}sus⁴ D/C D/C C-⁹

S. Bass *Simili...*

Dr.

33 Open Solos

A. Sax. Ama⁷ Dma⁷

Tpt. Dma⁷ Gma⁷

Tbn. Cma⁷ Fma⁷

Pno. F⁶/C C⁶(add ma⁷) Cma⁷ Fma⁷

S. Bass Cma⁷ Fma⁷

Dr. Walking Bass simili...

41

A. Sax. Gma⁷ C⁶(#11) E⁷_{9 5} Ama⁷ Dma⁷

Tpt. Cma⁷ F⁶(#11) A⁷_{9 5} Dma⁷ Gma⁷

Tbn. B^bma⁷ E^b_{6 9}(#11) G⁷_{9 5} Cma⁷ Fma⁷

Pno. B^bma⁷ E^b_{6 9}(#11) G⁷_{9 5} Cma⁷ Fma⁷

S. Bass B^bma⁷ E^b_{6 9}(#11) G⁷_{9 5} Cma⁷ Fma⁷

Dr. simili...

49 1.2

A. Sax. Gma^7 $C\%(\#11)$ $E\%_{5}^{7\#9}$ Ama^7 Ema^7

Tpt. Cma^7 $F\%(\#11)$ $A\%_{5}^{7\#9}$ Dma^7 Ama^7

Tbn. B^bma^7 $E^b\%(\#11)$ $G\%_{5}^{7\#9}$ Cma^7 Gma^7

Pno. B^bma^7 $E^b\%(\#11)$ $G\%_{5}^{7\#9}$ Cma^7 Gma^7

S. Bass B^bma^7 $E^b\%(\#11)$ $G\%_{5}^{7\#9}$ Cma^7 Gma^7

Dr. ///

57

A. Sax. Bma^7 $F\%(\#11)$ $A\#7$ Ama^7 Dma^7

Tpt. Ema^7 $B\%(\#11)$ $D\#7$ Dma^7 Gma^7

Tbn. Dma^7 $A\%(\#11)$ $C\#7$ Cma^7 Fma^7

Pno. Dma^7 $A\%(\#11)$ $C\#7$ Cma^7 Fma^7
 $F\%(\text{add } ma^7)$

S. Bass Dma^7 $A\%(\#11)$ $C\#7$ Cma^7 Fma^7

Dr. /// simili...

65

D.S. al Coda after Solos

A. Sax. *Gma7* *C⁹sus4* *C⁹* *C⁹sus4* *Cma7(#5)* Last x only

Tpt. *Cma7* *F⁹* *F⁹sus4* *Fma7(#5)*

Tbn. *B^bma7* *E^{b9}sus4* *E^{b9}* *E^{b9}sus4* *E^bma7(#5)*

Pno. *B^bma7* *E^{b9}sus4* *E^{b9}* *E^{b9}sus4* *E^bma7(#5)*

S. Bass *B^bma7* **D.S. al Coda after Solos**

Dr.

CODA

$\text{♩} = 82$ **Alto Solo, play figure when ready**

71 *A11(add 9)* *Dma7(add 9)* *A11(add 9)* *Dma7(add 9)* **Vamp till Fade**

A. Sax. *A11(add 9)* *Dma7(add 9)* *A11(add 9)* *Dma7(add 9)* **Vamp till Fade**

Tpt. *On Cue, fade after sax figure*

Tbn. *On Cue, fade after sax figure*

Pno. *C11(add 9)* *Fma7(add 9)* *C11(add 9)* *Fma7(add 9)*

S. Bass *Simili* **Vamp till Fade**

Dr.

Waltz for Desmond

Alto Saxophone

1 **Intro Vamp** **3**

5/4

8 *mp*

13

18 *mf*

23

28 *mp*

33

38 **Open Solos** *Ama*⁷ *Dma*⁷

42 *Gma*⁷ 1.2 *C*^{6/9}(#11) *E*^{7#9}/_{#5}

46 *Ama⁷* *Dma⁷*

50 *Gma⁷* *C^{6/9}(#11)* *E^{7#9}_{#5}* 1.2

54 *Ama⁷* *Ema⁷*

58 *Bma⁷* *F#^{6/9}(#11)* *A#⁷*

62 *Ama⁷* *Dma⁷*

66 *Gma⁷*

D.S. al Coda after Solos

68 *D⁹(sus4)* *D⁹* *D⁹(sus4)* *Fma⁷(#5)*

CODA

Alto Solo, play figure when ready

72 *F#¹¹(add9)* *Dma⁷(add 9)* *A¹¹(add 9)* *Dma⁷(add 9)*

Vamp till Fade

Trumpet in B♭

Waltz for Desmond

Jason Lee Bruns

Jazz Waltz ♩=82

1 **Vamp**

3

5 **A**

8

13 *p*

21 **B** *mp*

29 *p*

Open Solos

37 *Dma7* *Gma7*

41 *Cma7* *F6/9(#11)* *A7#9 #5*

45 *Dma7* *Gma7*

49 *Cma7* *F6/9(#11)* *A7#9 #5*

53 Dma⁷ Ama⁷

57 Ema⁷ B⁹(#11) D^{#7}

61 Dma⁷ Gma⁷

65 Cma⁷ **D.S. al Coda after Solos**
F^{9sus4} F⁹ F^{9sus4} Fma⁷(#5)

71 **CODA** On Cue, fade after sax figure **Vamp till Fade**

Flügelhorn

Waltz for Desmond

Jason Lee Bruns

Jazz Waltz ♩=82

1 Vamp 4

5 A 7

13 *p*

21 B *mp*

29 *p*

Open Solos
37 *Dma*⁷ *Gma*⁷

41 *Cma*⁷ *F*^{6/9}(#11) *A*^{7#9}/_{#5}

45 *Dma*⁷ *Gma*⁷

49 Cma7 F $\frac{9}{\#11}$ A $\frac{7}{\#5}$

53 Dma7 Ama7

57 Ema7 B $\frac{9}{\#11}$ D#7

61 Dma7 Gma7

65 Cma7 F $\frac{9}{\#11}$ F $\frac{9}{\#11}$ F $\frac{9}{\#11}$ Fma7(#5)

D.S. al Coda after Solos

71

CODA

Vamp till Fade

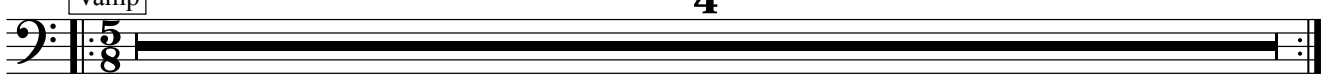
Trombone

Waltz for Desmond

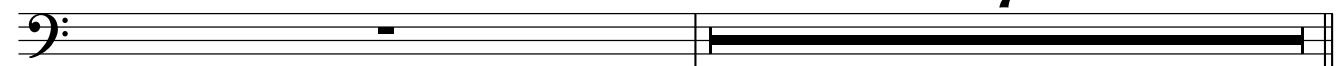
Jason Lee Bruns

Jazz Waltz ♩=82


1 Vamp 4



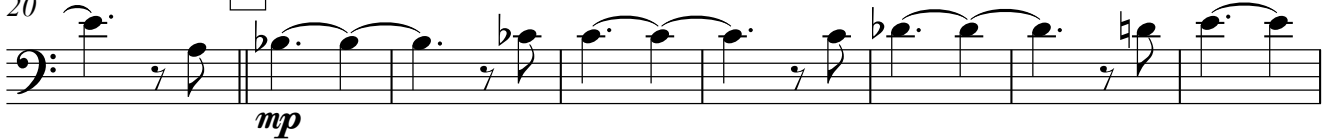
5 A 7




13 *p*

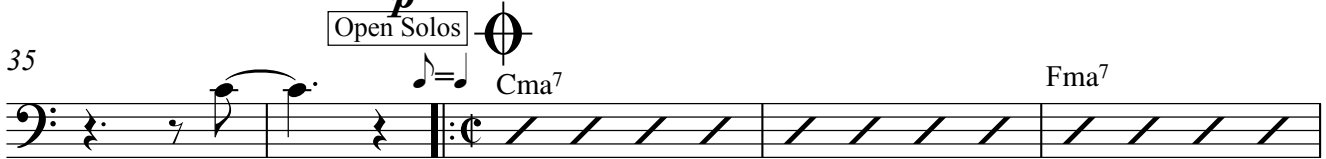



20 B *mp*



28



35 *p* Open Solos  *Cma7* *Fma7*



40 *Bbma7* *Eb6/9(#11)* *G7#9/#5*



45 *Cma7* *Fma7*



49

B \flat ma⁷ Eb \flat ₉(#11) G⁷₅^{#9}

53

Cma⁷ Gma⁷

57

Dma⁷ A \flat ₉(#11) C#⁷

61

Cma⁷ Fma⁷

65

B \flat ma⁷ Eb^{9sus4} Eb⁹ Eb^{9sus4} Ebma⁷(#5)

D.S. al Coda after Solos

71

CODA

Vamp till Fade

String Bass

Waltz for Desmond

Jason Lee Bruns

Jazz Waltz ♩=82

1 **Vamp**

Simili...

5 **A**

Simili...

13

Simili...

21 **B**

25

29

Simili...

Open Solos

37 **Cma7** **Fma7**

Walking Bass

41 **B^bma7** **E^b6/9(#11)** **G^{7#9}#5**

45 Cma⁷ F ma⁷

49 B^bma⁷ E^b6/9(#11) G⁷_{#5}

53 Cma⁷ Gma⁷

57 Dma⁷ A6/9(#11) C#7

61 Cma⁷ Fma⁷ B^bma⁷

66 **D.S. al Coda after Solos**

71 **CODA** **Vamp till Fade**

Piano

Waltz for Desmond

Jason Lee Bruns

Jazz Waltz ♩=82

1 **Vamp** **D/C**
mp Simili...ad lib w/ Drums

5 **A** **D/C** **D/C** **C-9** **F6/C** **Cma7**
Ad Lib... *mf* Ad Lib...

13 **D/C** Ad Lib Jazz Waltz **C-9**

17 **F6/C** **Cma7**

21 **B** **A^b13sus4** **Gma9sus4**

Waltz for Desmond - Piano

25 $A^{\flat 13}_{sus4}$ D/C

29 D/C C-9

33 F6/C Cma7

Open Solos

37 Cma7 Fma7

41 B \flat ma7 E \flat 6/9(#11) G7 \sharp 9 \sharp 5

45 Cma7 Fma7

49 B \flat ma7 E \flat 6/9(#11) G7 \sharp 9 \sharp 5

Waltz for Desmond - Piano

53

Cma7 Gma7

57

Dma7 A6/9(#11) C#7

61

Cma7 Fma7

65

D.S. al Coda after Solos

Bbma7 Eb9sus4 Eb9 Eb9sus4 Ebma7(#5)

71

CODA

C11(add 9) Fma7(add 9)

73

Vamp till Fade

C11(add 9) Fma7(add 9)

Drum Set

Waltz for Desmond

Jason Lee Bruns

Jazz Waltz ♩=82

1 **Vamp**

Musical staff for the Vamp section. It begins with a 5/8 time signature. The first two measures contain whole rests. The third measure features a half note with a fermata, marked *mp*. The section concludes with a double bar line and repeat dots. The instruction "Ad Lib Color with Piano" is written below the staff.

5 **A**

Musical staff for section A, starting at measure 5. It begins with a 5/8 time signature and a snare drum icon. The first four measures consist of a rhythmic pattern of eighth notes on the snare drum, marked "Simili...". The fifth measure contains a half note with a fermata, marked *mf*. The section ends with a double bar line and repeat dots.

13

Musical staff for section A continuation, starting at measure 13. It continues the rhythmic pattern of eighth notes on the snare drum. The section ends with a double bar line and repeat dots.

21 **B**

Musical staff for section B, starting at measure 21. It consists of a continuous rhythmic pattern of eighth notes on the snare drum. The section ends with a double bar line and repeat dots.

29

Musical staff for section B continuation, starting at measure 29. It continues the rhythmic pattern of eighth notes on the snare drum. The section ends with a double bar line, a repeat sign, and a common time signature (C).

Open Solos

37

Musical staff for the first part of the Open Solos section, starting at measure 37. It begins with a common time signature (C). The first four measures show a rhythmic pattern of eighth notes with asterisks, marked "simili...". The section ends with a double bar line and repeat dots.

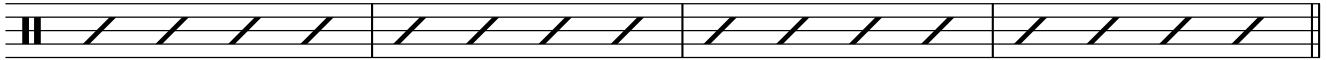
41

Musical staff for the second part of the Open Solos section, starting at measure 41. It consists of a continuous rhythmic pattern of eighth notes on the snare drum. The section ends with a double bar line and repeat dots.

45

Musical staff for the third part of the Open Solos section, starting at measure 45. It shows a rhythmic pattern of eighth notes with asterisks, marked "simili...". The section ends with a double bar line and repeat dots.

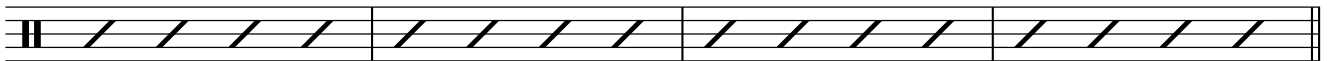
49



53

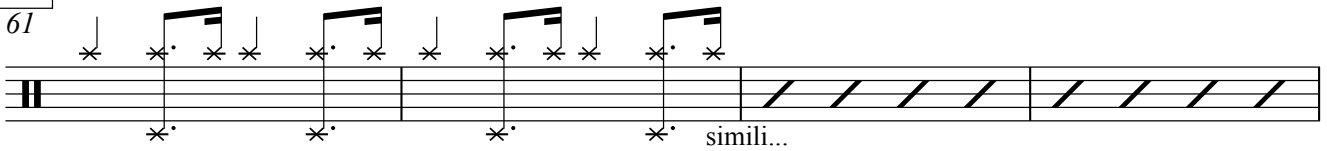


57



Open Solos

61



65

D.S. al Coda after Solos



71

Vamp till Fade

